

3
BED

A Stunning Detached Bungalow Backing Onto Fields

5, Howey Close, Newhaven, BN9 0NX

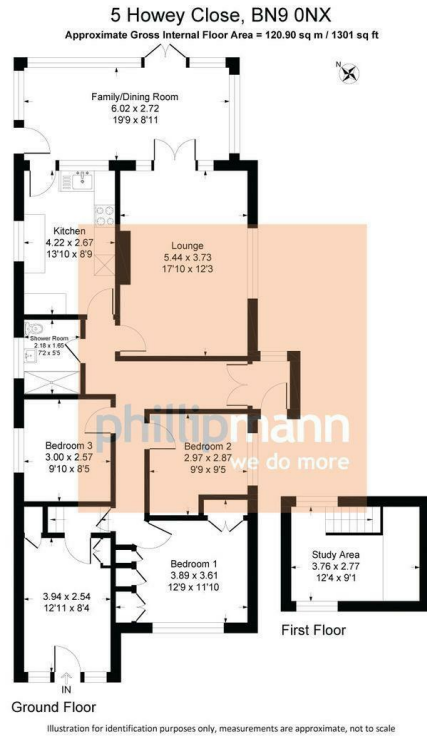


Price £389,950

Freehold

phillipmann
we do more

www.phillipmann.com



inbrief...

Phillip Mann estate agents are delighted to offer for sale this stunning three bedroom detached bungalow located in Howey Close. The property has well been looked after over the years of ownership and an internal inspection comes highly recommended.

A part glazed entrance door leads to entrance porch which leads to the entrance hall, here there is loft access and doors which lead to the accommodation.

The lounge is a lovely bright room with wood flooring, feature electric fire and patio doors gives access to the full width conservatory. This doubles up as a great dining room which overlooks the rear garden and fields beyond. The kitchen is a good size and is fitted with a range of units which incorporates a selection of cupboards and drawers. There is a built in sink unit along with a oven and hob. There is ample of appliance space and a window overlooks the side. Bedroom one is a good size double with built in wardrobes and a window overlooks the front. Bedroom two and three are both good size doubles which overlook the side. There is a shower room which has a large walk in shower, low level WC and wash hand basin. Completing the inside there is extra reception room (previously a garage) which has it's own private entrance from the front. From this room there is a access to a small study area/storage area.

Outside there is a delightful landscaped rear garden which has a large patio area. There is a good selection of plants, shrubs and flowers.

The front has off road parking along with a further area of garden.



Energy Rating C

Council Tax Band D

moreinfo...



Phillip Mann Newhaven Office
 16 Bridge Street, Newhaven, BN9 9PJ
 01273 517517

To see more details on this & all our homes go to
www.phillipmann.com